

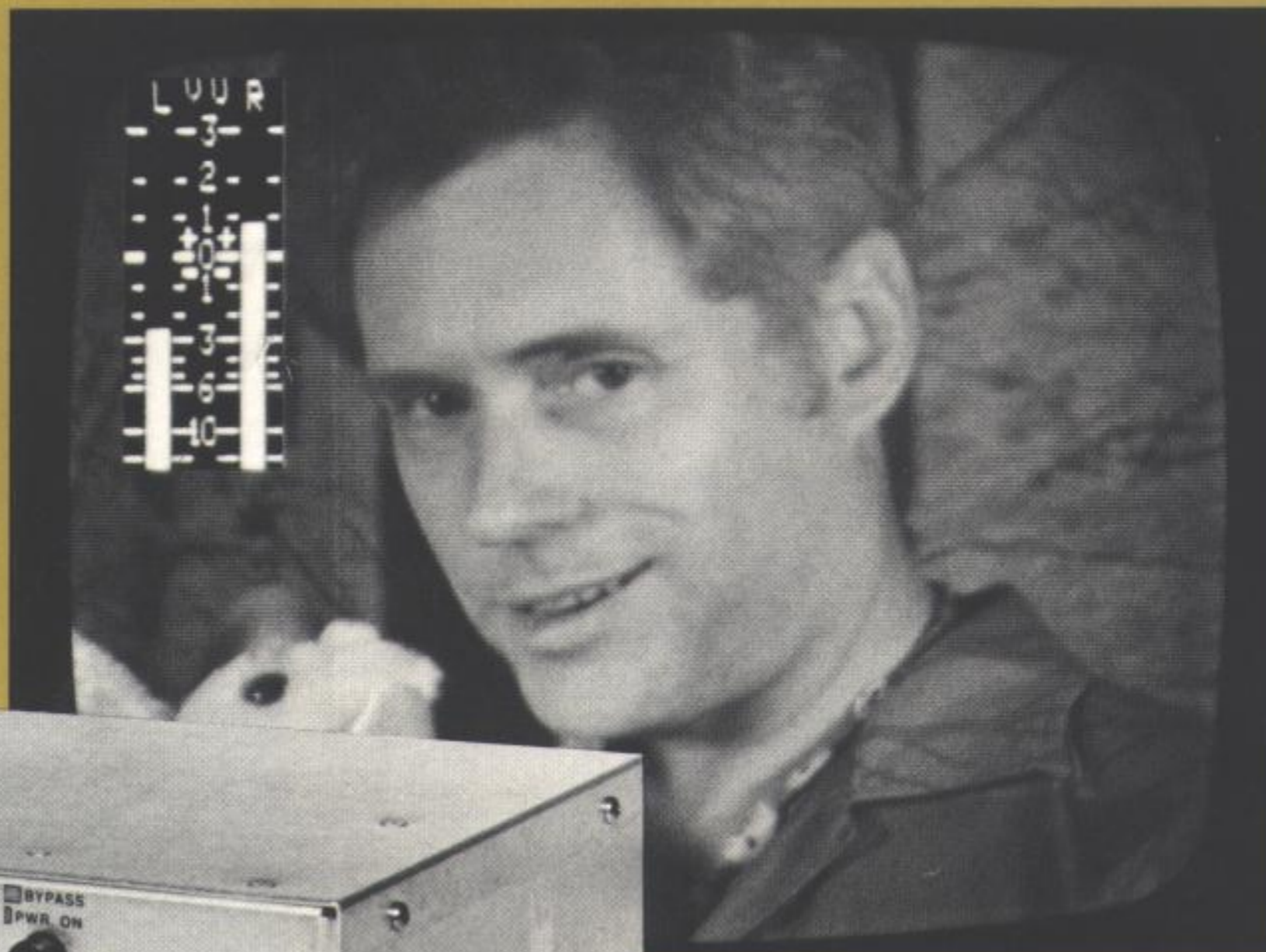


TVU

Audio Level Display

Inovonics' "TVU" displays stereo audio level metering on the screen of a video monitor. Applications include uses in television production, post-production, broadcast, cable-TV, and video duplicating facilities.

Connected in-line with the monitor video signal, "TVU" inserts into the picture a boxed audio level bargraph which may be positioned anywhere on the screen.



FEATURES

VU / PPM Switchable with adjustable Peak Flasher in VU mode.

High Accuracy and Resolution for precise level setting and program gain-riding.

Fully Annotated Display with complete and proper scale designations. Special scales possible with custom plug-in PROMs.

Separate Inputs for balanced studio lines and "semi-pro" equipment.

Self Contained in small, "mount anywhere" box chassis. Optional rack-mount panel available.

Inovonics Inc. Audio Recording, Signal Processing and Instrumentation

VIDEO

Signal Standards: NTSC as shipped; capacitor change required for optimum CCIR operation.

Input: Bridging or 75-ohm-terminating; accepts 1-Volt p-p composite video with negative sync.

Output: 75-ohm source, delivers 1-Volt p-p into 75-ohm load.

Response: $\pm 0.5\text{dB}$, 10Hz - 10MHz. Linear phase response over picture bandwidth.

AUDIO

Display Intergration: 300ms "VU" per ANSI C16.5:1954; 10 ms "PPM" per BS4297:1968.

Display Range: VU: quasi-log-dB scale, +3 to -20VU; PPM: linear dB scale, +6 to -22dB

Display Resolution: approx. 0.15dB-per-step at "zero" reference level; 93 steps total.

Frequency Response: $\pm 0.25\text{dB}$, 20Hz. - 20kHz.

Input Characteristics: (Left and Right): Primary—electronically balanced, bridging; accepts levels between 0dBm and +15dBm. Secondary—unbalanced, bridging; accepts single-ended "semi-pro" or consumer equipment sources at levels between -15dBmV and 0dBmV.

Input Adjustment Range: VU CALIBRATE (Input Gain) controls accommodate line level ranges noted above. PPM CAL controls offset PPM "zero" reference from Zero-VU by -5 to -13dB.

Peak Flasher (VU mode only): 10ms peak integration with "trip" level variable between +3VU and +15VU; OFF at full clockwise.

GENERAL

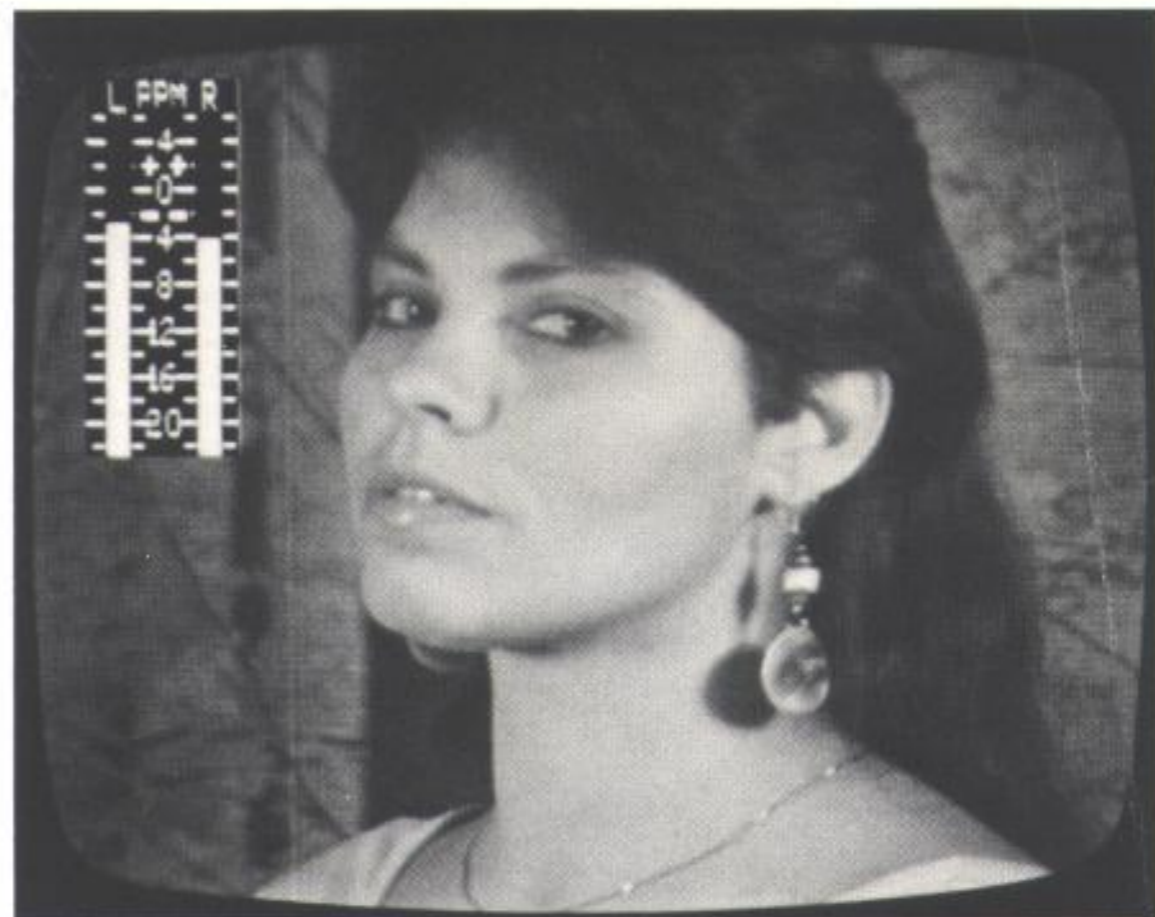
Power Requirements: 105 - 130VAC (230V available), 50/60Hz; 10 Watts.

Optional Rack Panel: 19"W x 1 $\frac{3}{4}$ "H (1U); Accommodates one or two "TVU" units.

Size (less optional rack-mount panel): 8 $\frac{1}{2}$ "W x 1 $\frac{1}{2}$ " H x 6 $\frac{1}{2}$ " D.

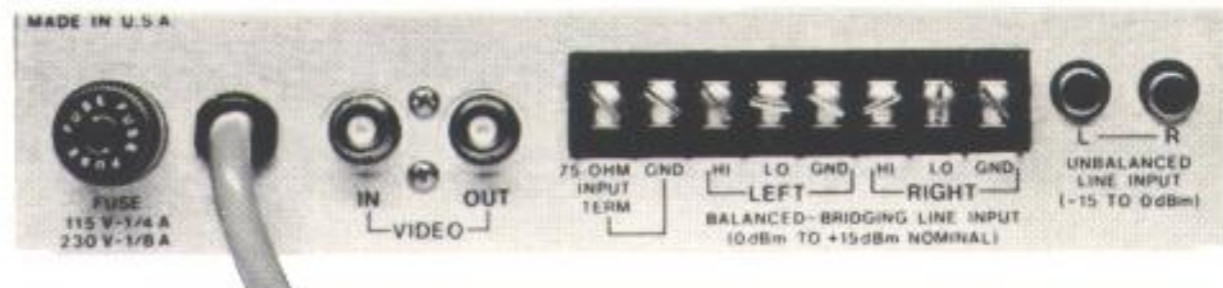
Shipping Weight: 4 lbs.

VU Display

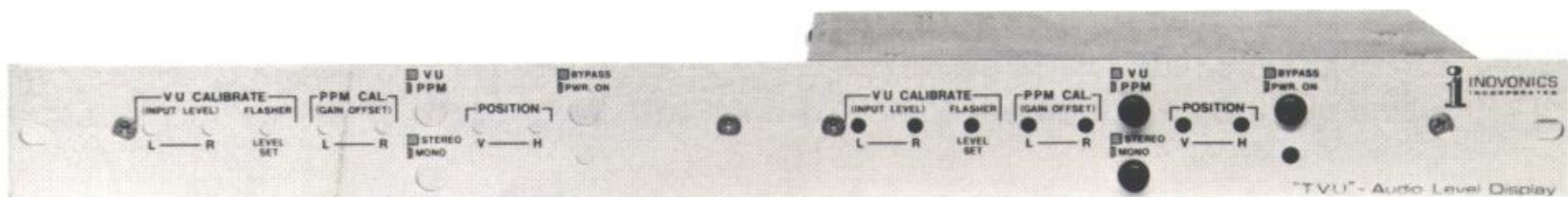


PPM Display

Rear View



Optional Rack Mount



Inovonics Inc.

1305 Fair Avenue, Santa Cruz, California 95060
(408) 458-0552 TLX: 325670 (INOVONICS UD)

